

**DIGISTELL**

Your Dental CAD Solution for Partial



# PRODUCT OVERVIEW

DIGISTELL 2.1.2

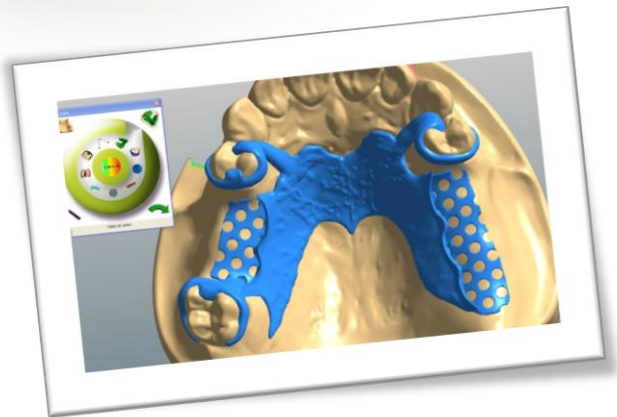
# **DIGISTELL**

Your Dental CAD Solution for Partial



**DIGISTELL** is part of the **DIGILEA** product suite, a versatile range of **innovative dental CAD** solutions.

**DIGISTELL** is the result of **several years** of collaboration between **dental experts** and **CAD/CAM engineers** to deliver to the market a **reliable and productive** digital solution for the design of **removable framework**.

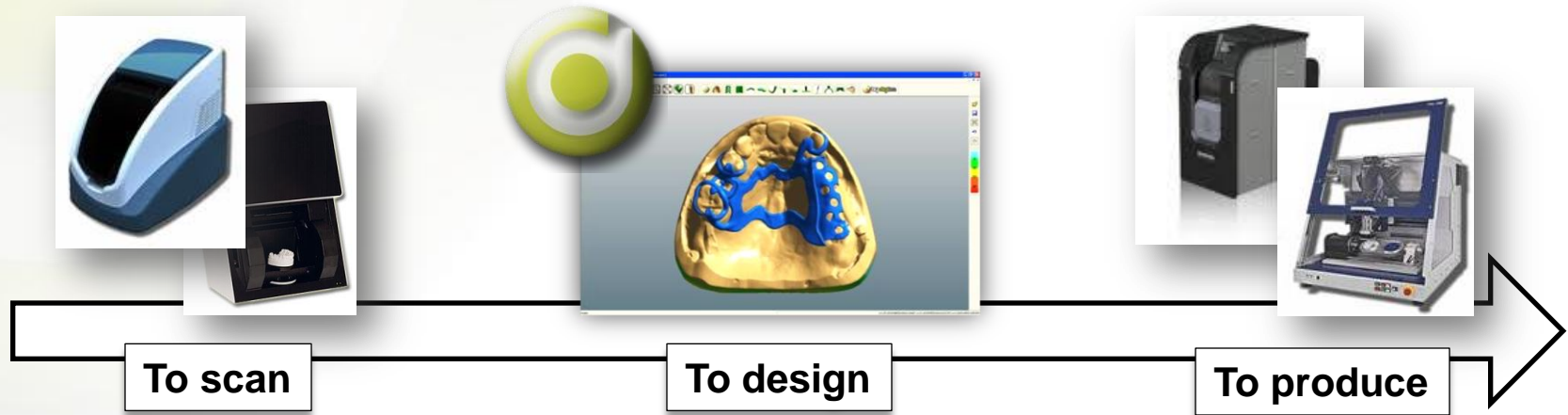


**DIGISTELL** increases your **productivity**, reduces the overall **production cycle time** while enhancing the **daily way of working** of the lab technicians. **DIGISTELL** is **the right fit** for the **dental labs** seeking a **comprehensive** and **proven** digital design solution.

# DIGISTELL

Your Dental CAD Solution for Partial

 digilea  
Innovative Dental CAD Solutions



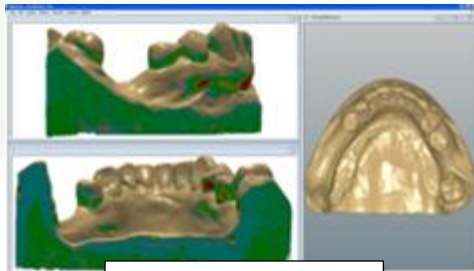
Between the **scan of the master model** and the **production of the pattern** with a 3D printing or milling machine, DIGISTELL is **the corner stone** of the digital process for partials. To choose the **cutting edge DIGISTELL** technology for designing your pattern, that's the **warranty** to produce **parts fitting right** at the first time.

**DIGISTELL** is an **OPEN** solution you will **easily integrate** in your lab environment, whatever **the equipments already in place** or **your production, in-house or outsourced**.

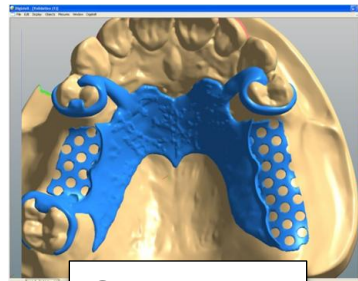
# DIGISTELL

Your Dental CAD Solution for Partial

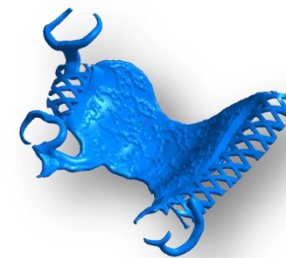
**DIGISTELL** combines the **intelligence** of a 3D CAD system and the **know-how** of lab technicians. The system guides you in a **step by step workflow** from the **preparation**, the **sculpture** to the **finishing** stage of the model.



**Preparation**



**Sculpture**



**Finishing**

**Easy to use** and **intuitive**, DIGISTELL emulates a **manual wax design** approach while **speeding the sculpture** of the pattern and **increasing its accuracy**.

The **DIGISTELL** based process is **reduced by 60 to 80%** compared to a conventional production process, **bypassing certain preparation steps** (such as the duplication) and **increasing the productivity** of the lab technicians.

# DIGISTELL

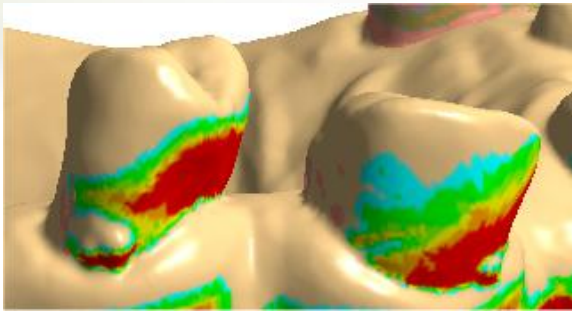
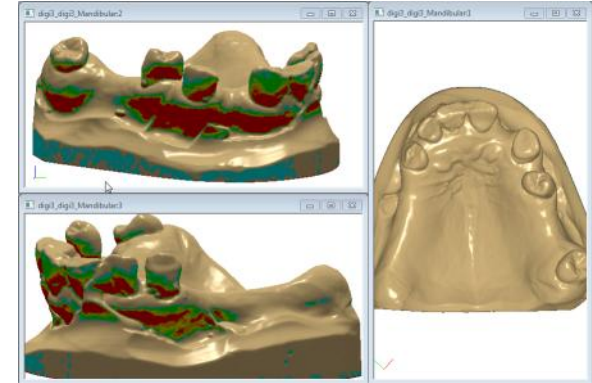
Your Dental CAD Solution for Partial



*Innovative Dental CAD Solutions*

**DIGISTELL** is the digital **workbench** of the lab technicians, including a **wide palette** of productive tools similar to the familiar ones they used to have.

Clasp, retention grid, major connector... **wax patterns** have been all **replaced** by the various in-house features of DIGISTELL.

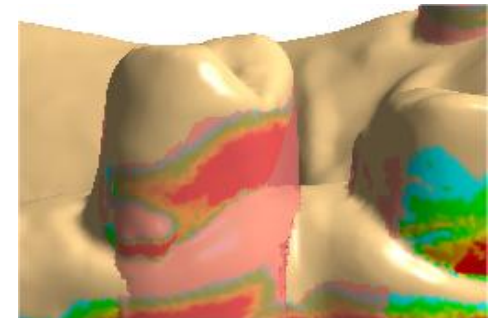


A **digital survey** is replacing the manual surveyor to **easily** identify the **retention areas** and to **setup** the insertion axis in **less than 1 minute**.

DIGISTELL displays on screen **the undercut deepness** according to an **accurate virtual gauge**.

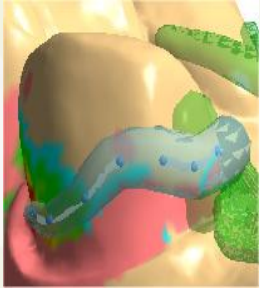
The **block-out command** allows to define one tooth after another **the virtual wax** to be added to the model. To reach the **best-in-class manufacturing quality** standards, DIGISTELL features a **draft angle** parameter which **strengthens the accuracy** of the patterns in these sensitive areas, thus **direct impacts the final quality** of the removable frameworks\*.

*\* Highly recommended for a Direct Metal Laser Sintering (DMLS) production.*

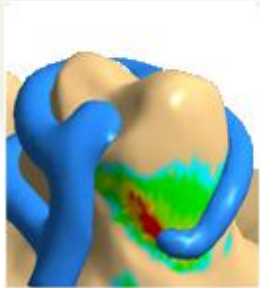


# DIGISTELL

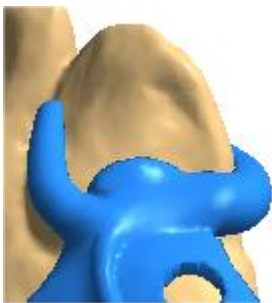
Your Dental CAD Solution for Partial



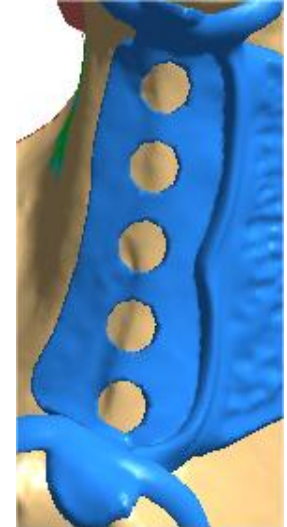
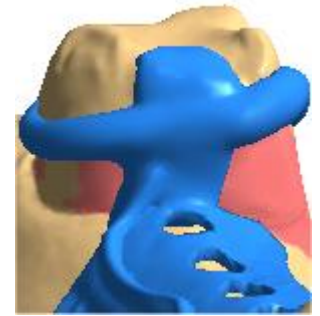
**DIGISTELL** opens up a **new design approach** for the lab technicians. **Friendly, intuitive** and **natural**, the set of tools available with DIGISTELL enables more **creativity** and **efficiency**.



**Select a feature, create some points** on the model and automatically DIGISTELL displays a **preview of the digital pattern**. Interactively, the lab technicians can **move** (add or remove) the **control points** to adapt **precisely the placement** of the pattern.

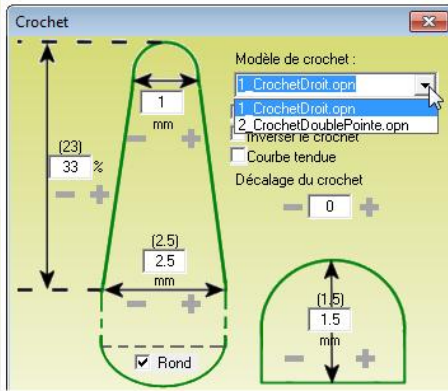


**Up to the last minute** of the sculpture stage, DIGISTELL allows the technicians to **handle a modification** for any of the patterns designed. Just **edit the mesh** and DIGISTELL will **restore the different parameters** of the feature and its guiding curve for modification.

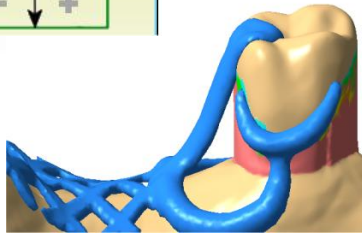


# DIGISTELL

Your Dental CAD Solution for Partial

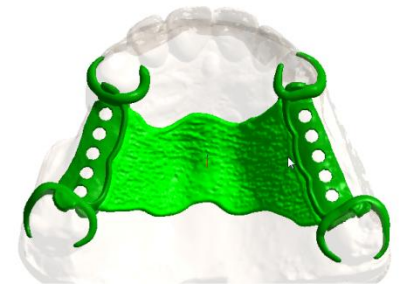


The **digital patterns** released with DIGISTELL are **parametric** and **fully customizable**. The lab technicians can quickly define the **right set-up** of each pattern, matching the **dentist prescriptions** and **manufacturing requirements**. Added to the DIGISTELL library embedded, these patterns become **new standard features** ready to be applied on the model.



To **reduce significantly** the finishing, **DIGISTELL** includes various parameters **optimizing the geometry** of the pattern in **specific areas** such as the **interproximal** or the **gingival crevice** spaces.

With **DIGISTELL**, the lab technicians keep a **full control on the design** outcome. There is **no limit to the design** of patterns but the **creativity** of the technicians. The digital approach **frees** them from **fastidious** and **time-consuming** manual tasks to **leverage their skills**, their **knowledge** focussing on the **core step** of the process, the **design**.



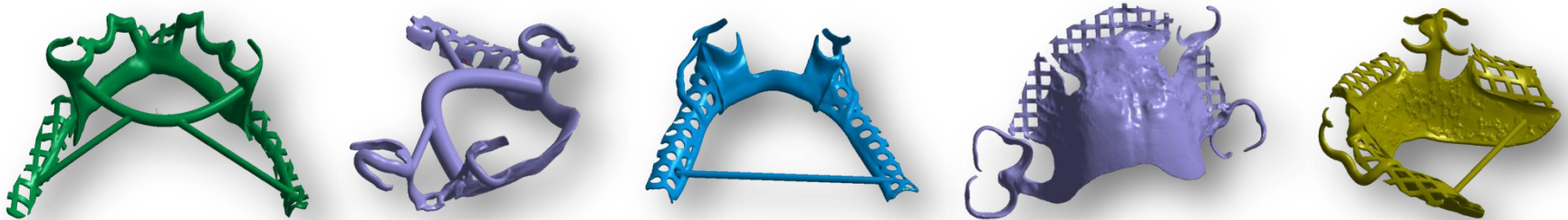
# **DIGISTELL**

Your Dental CAD Solution for Partial



**DIGISTELL**, the **high-end technology** for the design of removable frameworks combines the **CAD system assets** (model accuracy, process repeatability, productivity gain) and the **dental experience** of lab technicians.

**Numerous labs** in France and abroad **trust DIGISTELL** every day for their partials conception. Request **your own trial version** to start measuring **benefits** in your lab as well.



**More information:**

[www.digilea.com](http://www.digilea.com)  
[contact@digilea.com](mailto:contact@digilea.com)